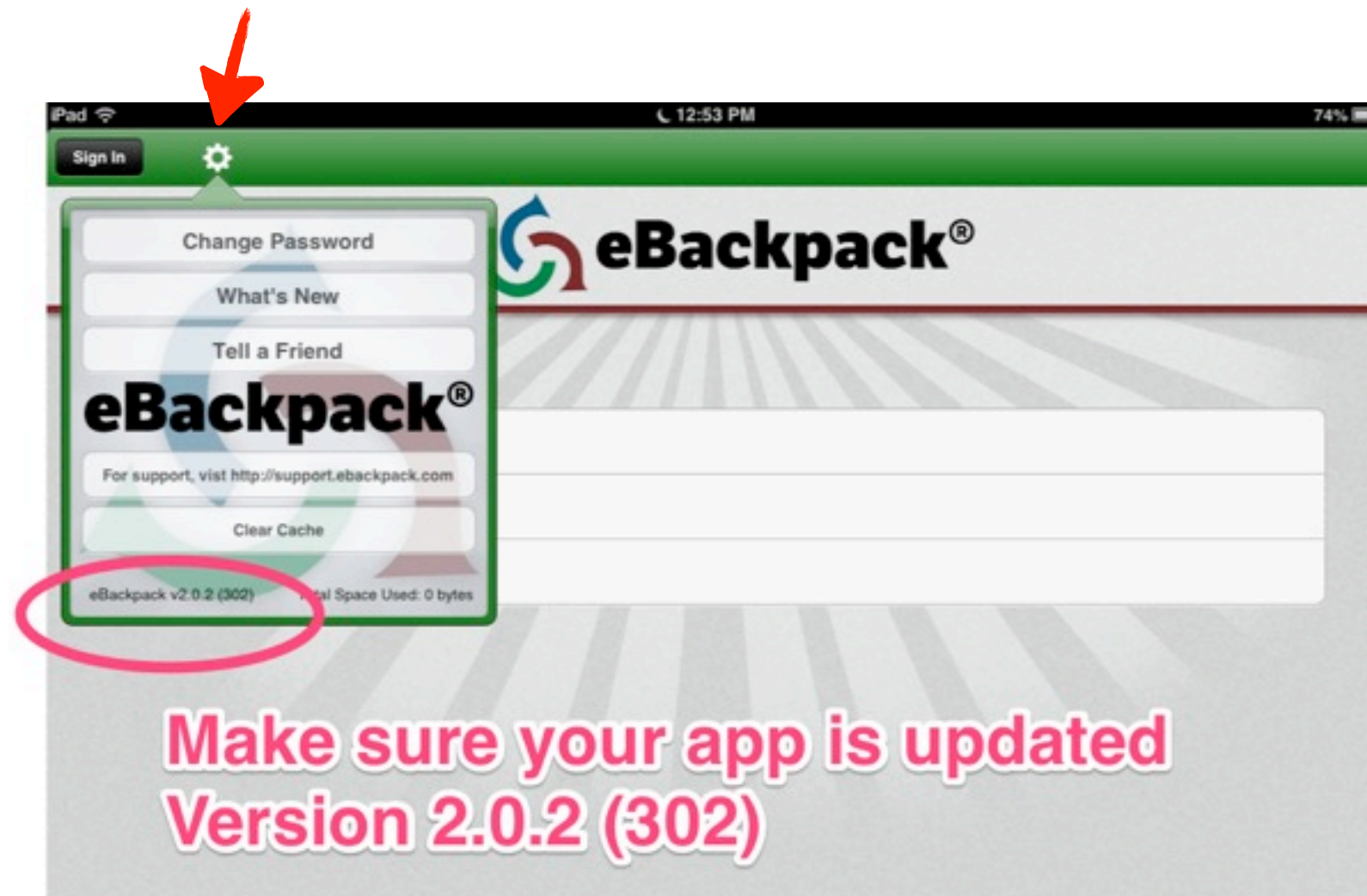




Getting Started with eBackpack for students

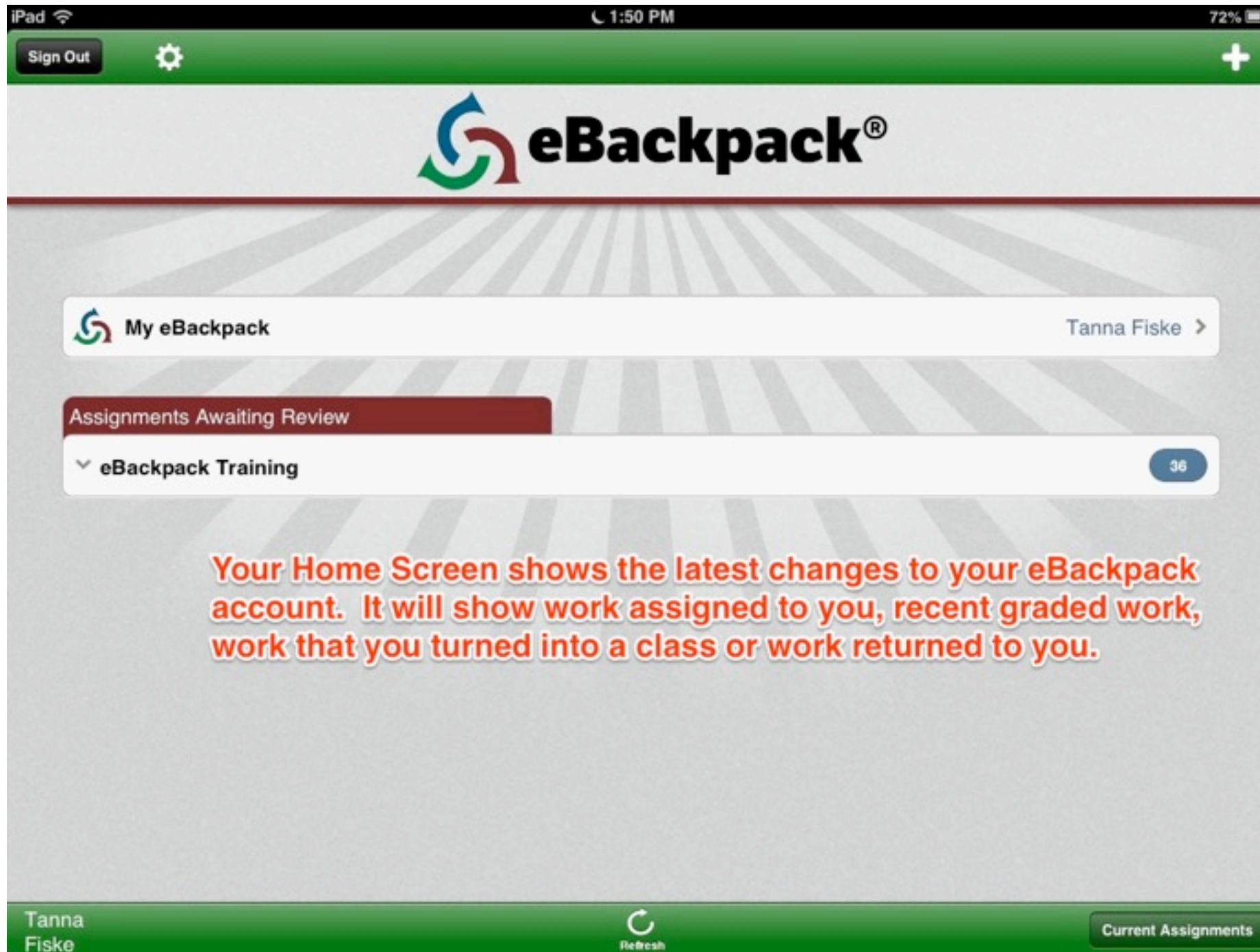


Make sure you have version 2.0.2 (302). If you do not, go to the App Store and update eBackpack

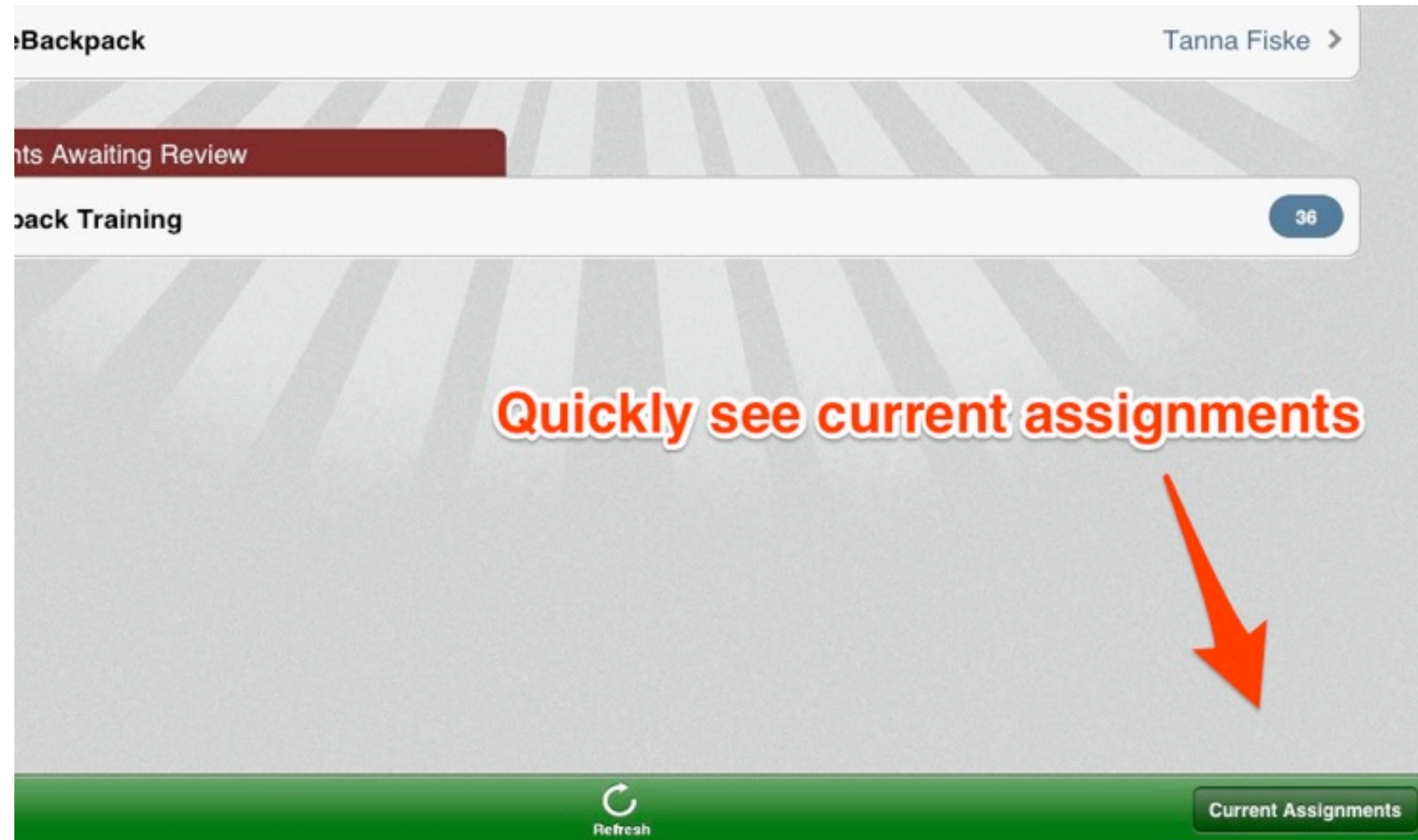


LOGIN

Account name is just eanes this year
DO NOT include @eanesisd.net in username



Home Screen



Current Assignments

Class Assignment Due Turned In Completed

No results were found.

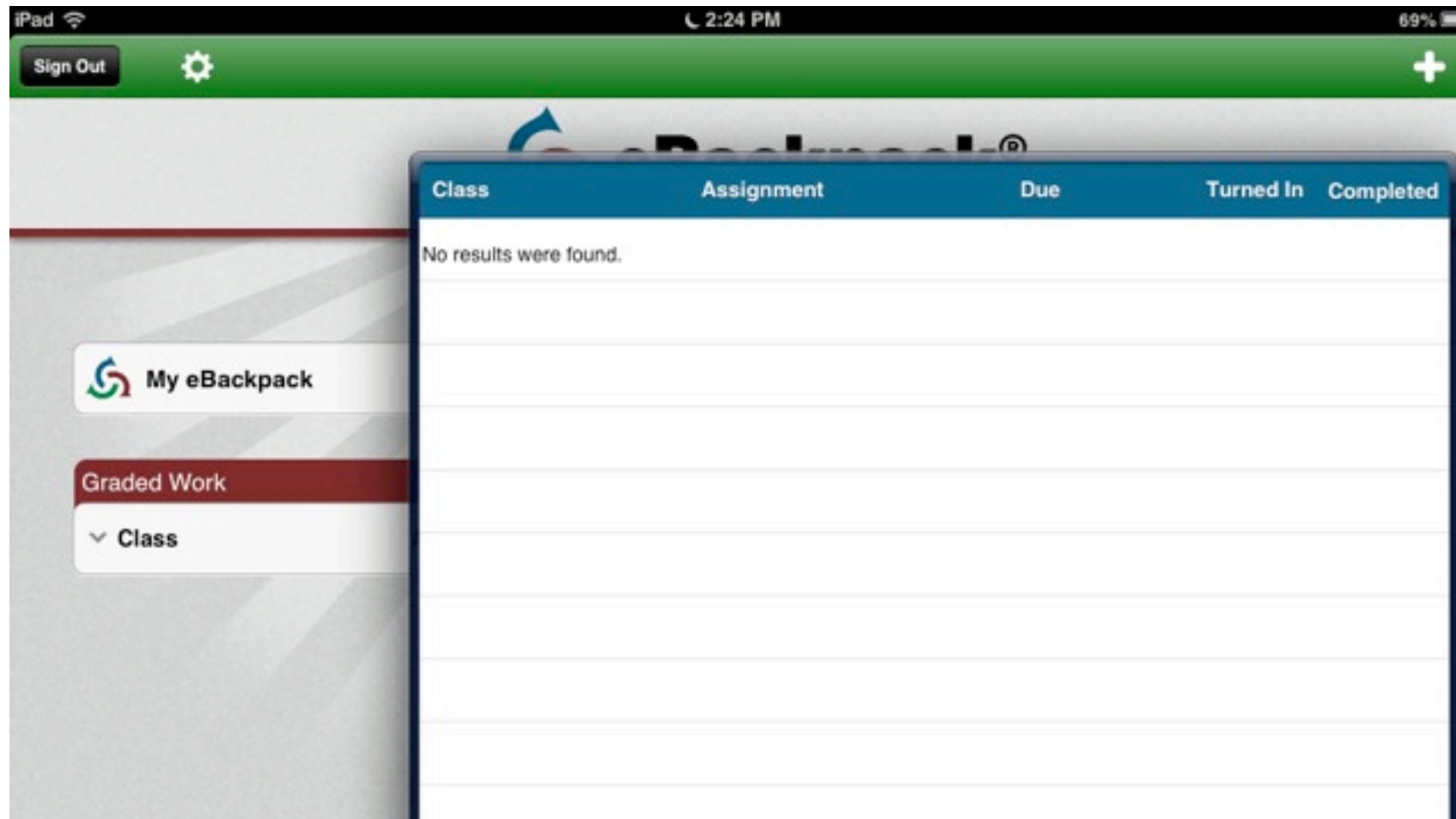
pack

Be aware of these two different views

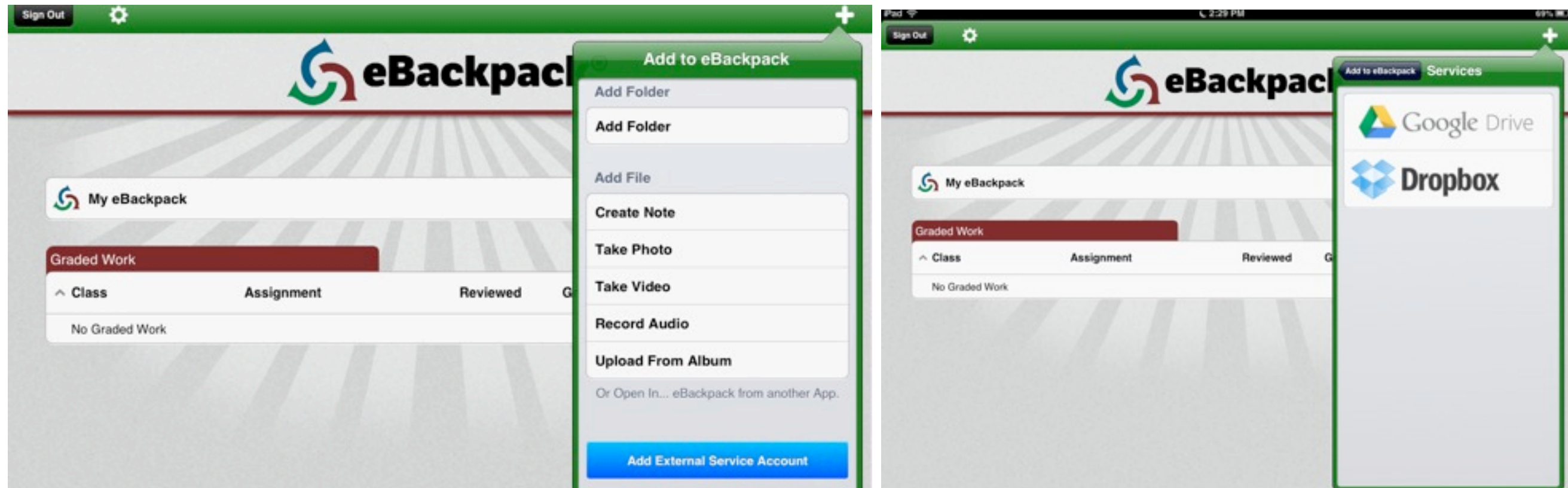
Not Completed Completed

Refresh

Current Assignments



Your assignments will be listed here. You can also see the due date, if it has been turned in and completed.



From the Home Screen. Press the + button--Add External Service Account (blue button) to connect your Dropbox and Google Drive accounts

iPad 4:23 PM 93%

Sign Out [Settings] +

eBackpack®

 My eBackpack [_Tap Here_ to access your folders](#)

Graded Work

Class	Assignment	Reviewed	Grade
No Graded Work			

[Refresh] Current Assignments

Current Assignments
Easily work with assignments.

Assignment Review
Tue Aug 27, 2013 9:05 AM

Assignment Turn-In
Tue Aug 27, 2013 9:05 AM

E-Portfolio
Tue Aug 27, 2013 9:05 AM

My Files - Tanna Fiske
Tue Aug 27, 2013 9:05 AM

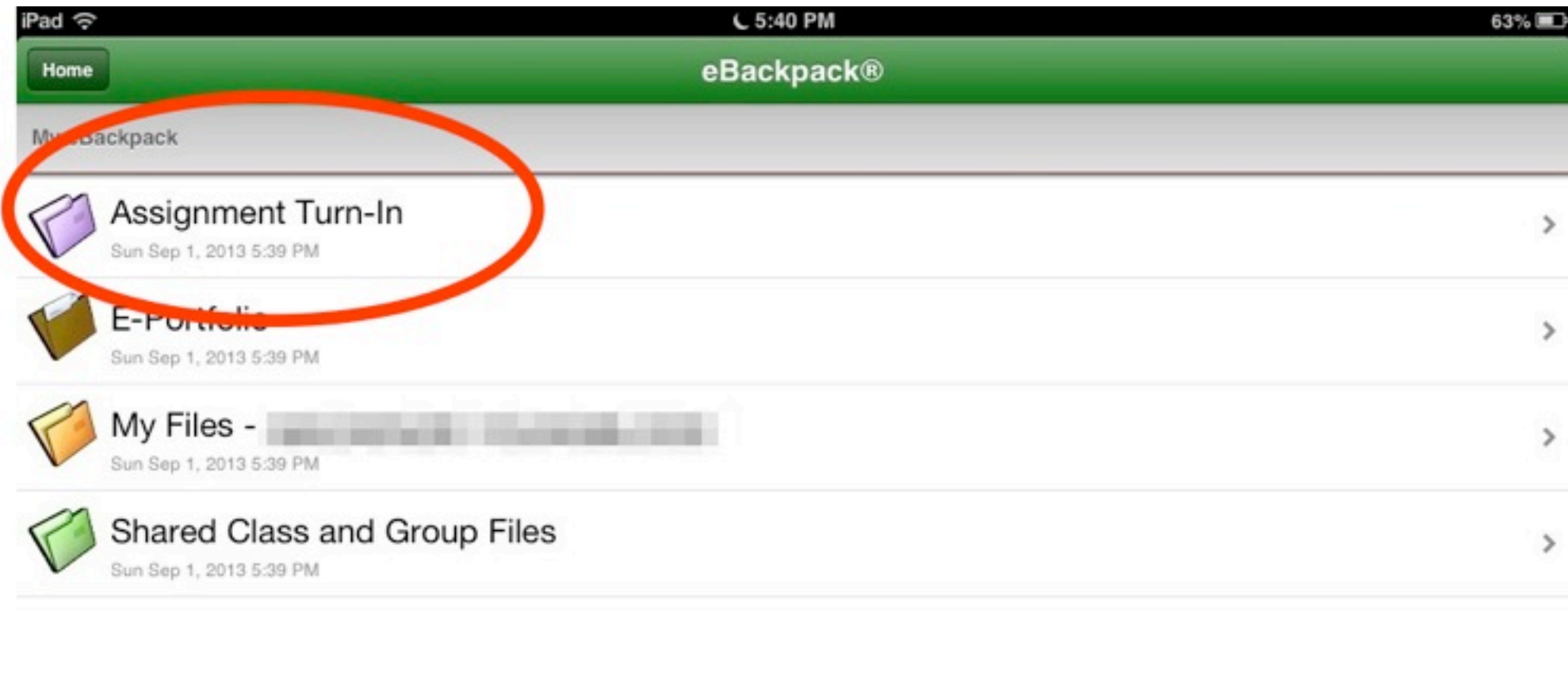
Shared Class and Group Files
Tue Aug 27, 2013 9:05 AM

My Files is a place to store your work. You can put partially finished work here before you turn it in. You will be able to login to a desktop and continue working. All types of files can go in here.

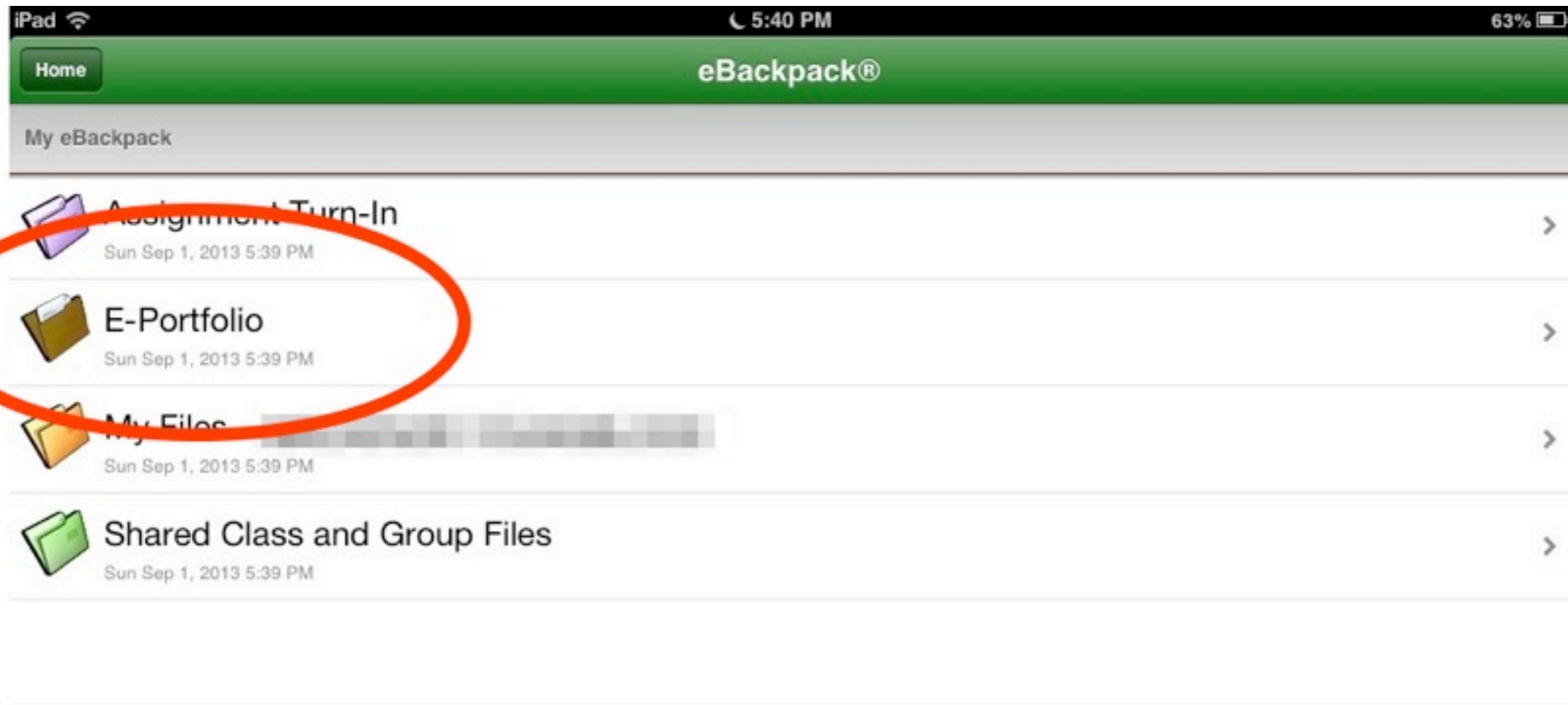
1 of 1

Beginning Sounds Worksheets | © Copyright KidsLearningStation.com | www.kidslearningstation.com

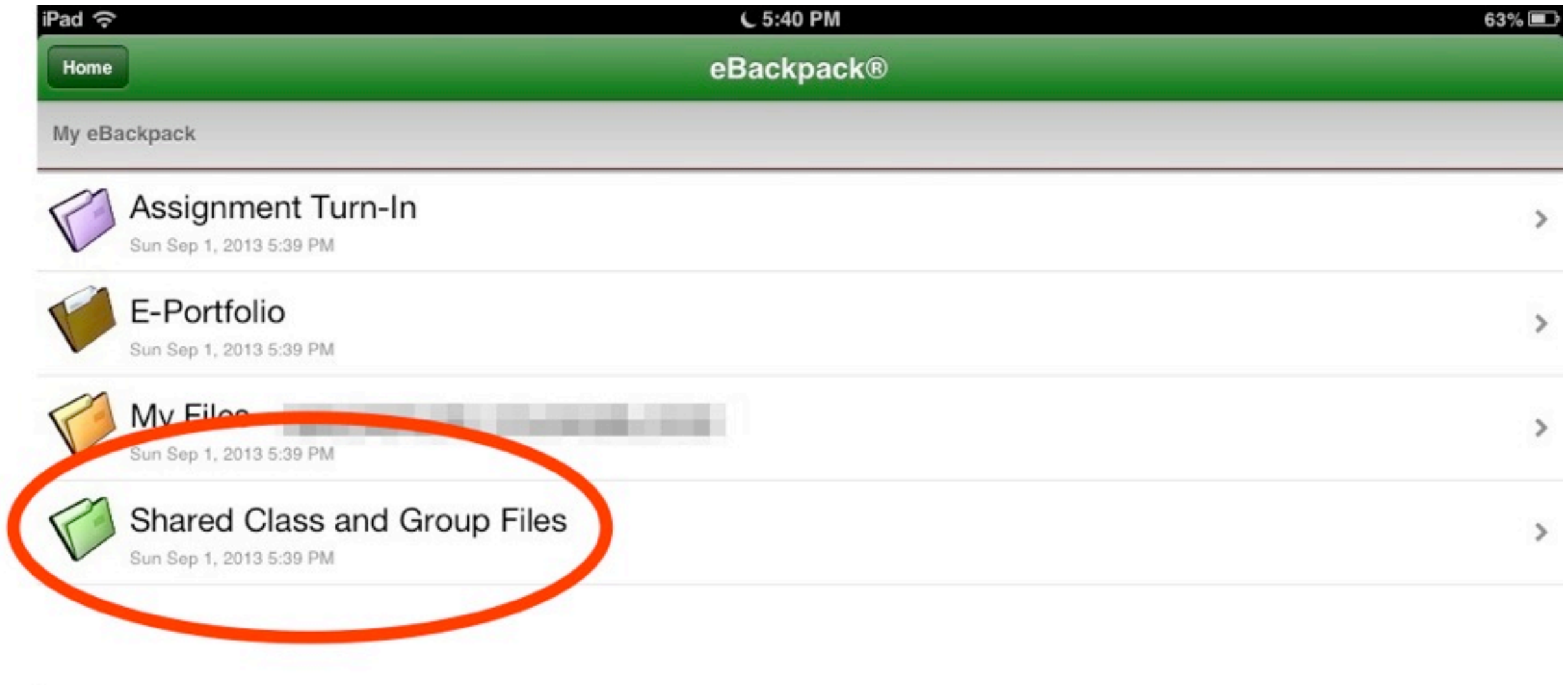
My Files-your name



Here you will find a place to turn-in your assignments by class and name.



E-Portfolio: This is a place to store your best work from year to year. It is organized by grade level.



Shared Class and Group Files: These are files to be shared with a group. For students these files are read only